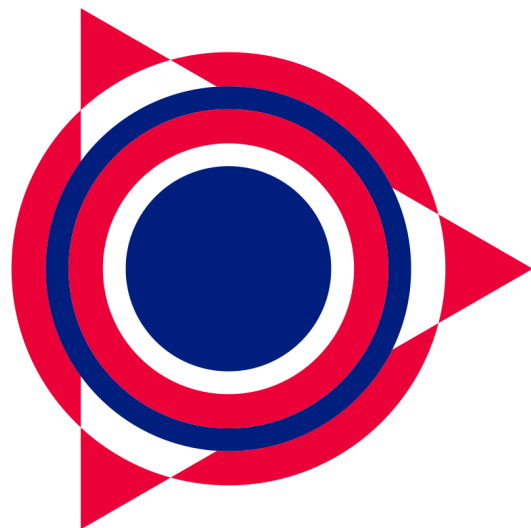




Event Information Guide

IBSA
World Games
Birmingham
2023



Welcome



On behalf of British Blind Sport, Birmingham City Council, University of Birmingham and MLS Contracts Ltd, I am delighted to welcome you to the **IBSA World Games** in the City of Birmingham, UK. Together, the partners, aim to deliver a world class and successful World Games, providing the very best environment for the athletes to compete in.

We are honoured to have been entrusted with this responsibility by the International Blind Sport Federation (IBSA) and we will endeavour to repay the trust placed in us. Staged every four years, the World Games are the pinnacle of the international calendar for eight of the sports in the programme as well as being one of the qualification events for athletes aspiring to compete in three sports at the Paris 2024 Paralympic Games.

Birmingham is a global city that needs no introduction. As the host of the 2022 Commonwealth Games, the city put on a great festival of sport. In hosting the IBSA World Games, Birmingham and Great Britain will again aim to show that it can provide the best possible stage for the world's best blind and partially sighted athletes to showcase their talents. Additionally, we hope that all team members will have the opportunity to experience some of the history and contemporary culture for which Birmingham is so famous.

We hope the information in this guide provides all the information you need to organise your team's attendance at the World Games but, if not, please do not hesitate to contact us.

We look forward to seeing you in Birmingham in August this year.

Sallie Barker MBE

Chair, British Blind Sport



General Information

Host Organising Committee for the IBSA World Games 2023:

Games Services: 0330 0431015

Medical Number : 0330 0431056

Email: IBSAGames2023@mlsgb.co





Key Event Dates

The Organising Committee of the 2023 IBSA World Games Birmingham have outlined some important dates below:

18 – 27 August 2023

Official Arrival and Check-In Available between	12 - 21 August
Classification Window 1	13 – 15 August
Competition on	15 – 27 August
Classification Window 2	18 – 21 August
Opening Ceremony on	18 August
Official Departure Available between	25 –28 August
Final Competition Day	27 August



Travel and Transport Information

Games Transport

- Transport services will be provided between the Games Village and all competition venues.
- Transport leaves from the Transport Hub at The Vale, The Transport Hub at the Vale is the Mason Car Park.
- Timings for Transport will be provided upon arrival.
- You can walk to all Campus venues if you wish, but this is a leisurely stroll that can take around 15- 25 minutes across the campus.
- Off Campus Venues (Cricket, Partially Sighted Football, Powerlifting Ten Pin Bowling, Tennis) all transport will depart from the Transport Hub.
- Classification Transport will depart from the Transport Hub.

PLEASE NOTE

It is the responsibility of the Team / Athletes / Officials to ensure that they arrive on time for transport departures. Transport will not wait for any person who is late.

Arrival - Official Ports of Entry

- Birmingham Airport (BHX) and Birmingham New Street Station are the Games official ports of entry from which delegations and officials will be collected.
- The University of Birmingham Campus, which is the main hub of the Games and includes the Games Village, has its own train station connected directly to New Street Station. This is called University Station and the journey time is only 5-8 minutes.

Departure

Official departure days will span 22nd – 28th August.

It is important to note that transfers back to airports will be provided by the Local Organising Committee (LOC), however the LOC takes no responsibility for missed flights due to traffic, the competition over running or teams not completing the competition due to an early departure. Early departure does not qualify for a discount on fees.

Departure Schedules will be circulated during the event and all delegations and officials must confirm their departure details with Games Services / Transport Team

Parking Information

North East Car Park – Games Spectators

Charges are applicable 8am – 6pm Mon-Friday, there are no charges at the weekend.

- Up to 1 hour £2.50
- 1-3 hours £4.00
- 3-5 hours £5.50
- 5-8 hours £6.20
- Up to 10 hours £7.00

Payment at the North East Multi storey (B15 2SA) is either in cash at a payment machine (Floors 1-5) or via the RingGo mobile app, location code is 15677 link is <http://www.myringgo.co.uk/register>

Please note that we do not have use of the ground floor of this car park as it is exclusively used by the Hotel, please only use floors 1-5 only, signage is in place.



Welcome to the University of Birmingham

We are delighted to welcome you to the University of Birmingham. We're proud to be one of the key partners of the 2023 IBSA World Games. Founded in 1900, we were England's first civic university and more than 100 years on, our campus has grown to more than 672 acres. Each year, we welcome in excess of 35,000 students from across the world, employ more than 8,000 staff and have an alumni network of over 300,000.

Having recently delivered the Birmingham 2022 Commonwealth Games, as the largest Games Village, a competition venue hosting hockey and squash (two of the 19 sports), an official training venue and a tier 1 sponsor, we are honoured to host the Games Village and five of the 10 sports for IBSA 2023.

We hope you enjoy our state-of-the-art sporting and cultural facilities across our iconic campus and that your Games experience provides you with future life-long memories as part of your visit to Birmingham.



UNIVERSITY OF
BIRMINGHAM



Birmingham
City Council





University of Birmingham Games Village Explained

Games Services

Games Services will be located within **Chamberlain Tower** and is the information center of the Games open daily between 07:00 -21:00.

Arrival to the Games Village

Upon arriving at the Games Village, administration contacts for nations will be taken to Games Services to proceed with check-in. Nations will be greeted by the IBSA World Games organisers before finalising check-in with a member of staff from the University of Birmingham in Chamberlain reception. There, you will be given access cards to both your accommodation and any other areas relevant to your nation and sport. You may be required to provide proof of identification and your passport if travelling in from outside of the United Kingdom. You may also be asked to complete a check-in form detailing your onward destination information.

Please note, all nations must return their delegation's rooming list form by 4th August. **If the form is not completed and returned on time the teams room allocation will be made without Team manager input.** This is not required for teams allocated to just 1 flat..

No Keys or access to any rooms will be available to your delegation if there are any finance elements to be finalised or paid by your delegation.

Once check-in is finalised, your delegation will be escorted to their allocated accommodation block. If you require any further orientation around the Games Village, this is available on request at Chamberlain reception or the Vale reception. Please note, Shackleton reception will not be used for check-in but will be staffed 24 hours a day. Limited support is available outside the Games Services Opening Times.

If you have any issues with access cards, please call the below phonelines:

Chamberlain reception: (+44) 121 414 2838

Shackleton reception: (+44) 121 415 8520

Bedrooms in the Games Village

All bedrooms in the Games Village are single occupancy and ensuite. They will be equipped with standard fittings and fixtures, this includes:

- Bed
- Study chair and desk
- Bin
- Storage and shelving
- En-suite with shower and toilet
- Linen, one pillow and duvet
- Hand towel and bath towel
- Vanity pack (a small toiletries set)

The shared kitchen of each apartment will contain a kettle, mugs, tea, coffee, milk, biscuits, sugars and other soft furnishings. The IBSA World Games will be providing 3 meals a day to all registered participants in the Games Village, so we do not anticipate use of the hobs and ovens. Please note, cooking and dining utensils will not be provided as a result. All kitchens will, however, contain a fridge, freezer and microwave should they be required.

Please see below links to 360 tours of each apartment block:

Chamberlain: [Chamberlain - En-suite \(matterport.com\)](https://matterport.com/360-tour/Chamberlain-En-suite)

Shackleton: [Shackleton - En-suite \(matterport.com\)](https://matterport.com/360-tour/Shackleton-En-suite)

Mason: [Mason - En-suite \(matterport.com\)](https://matterport.com/360-tour/Mason-En-suite)

Elgar Court: [Elgar Court - En-suite \(matterport.com\)](https://matterport.com/360-tour/Elgar-Court-En-suite)

As a reminder, Goalball athletes will NOT be accommodated at the University of Birmingham, but in the Sherbourne building at the University of Warwick.

Further information is provided in the Goalball specific event information guide.

Essential Accommodation Information

Please ensure you read the below fire safety information to ensure the health and safety of you and your delegation.

Testing of Fire Alarms will be taking place on Friday 18 August and Friday 25 August during the IBSA World Games. If an alarm is sounded for more than several seconds, you must evacuate the building immediately. Assembly points are displayed on the back of every bedroom door and in the hallways of every apartment. The rooming list policies ensure that there is a sufficient number of sighted individuals per apartment who can act as a guide in case of evacuation, if required. Please ensure that all members of your delegation take some time upon arrival to be sure of the evacuation route from their accommodation building and the assembly point to report to in the event of an alarm activation. If anyone is not confident of their evacuation route they must make the Chamberlain reception team aware immediately and assistance will be given. Please do not attempt to reenter the building until a member of the Student Living Staff, Security or Fire Service allows you to do so.

Fire alarms are scheduled to be sounded at the following times:

- Chamberlain 12:00 Friday 18 and 25
- Elgar Court 12:15 Friday 18 and 25
- Shackleton 12:30 Friday 18 and 25
- Mason 12:45 Friday 18 and 25

Please note, the University of Birmingham does not supply evacuation chairs. During a fire alarm, lifts will return to the ground floor and will not be in operation.

Housekeeping – linen and towel changes

Housekeeping services will be provided to all guests and be completed between 08:00 and 18:00 every day. If a guest does not want the service on a certain day, a Do Not Disturb sign can be displayed on the door. In these cases, servicing will be completed at the next scheduled housekeeping visit. Please note that U18's rooms will not be serviced each day as per safeguarding rules. Fresh Towels will be left in the communal kitchen.

A Cleaning Help Desk will be operating from 08:00 – 22:00 please contact the Shackleton or Chamberlain Reception for assistance during the Games.

Upon arriving at the room, the team member will:

- Knock the door and identify themselves as Housekeeping.
- Enter the room, straighten the bed, wipe down surfaces and vacuum if needed, empty the bin, refresh the bathroom.
- Outside of the bedroom the team member will check, and spot vacuum the hall, wipe down the kitchen, replenish tea and coffee supplies.
- Ensure all equipment and supplies required to complete the task are safely and sensibly located to avoid tripping hazards. When team members are working in corridors, landings, and stairwells all equipment will be kept on their left.

Linen and Towel Changes

- Your towels will be available on the end of your bed on arrival.
- Towels will be exchanged for clean ones every other day.
- Towels must **NOT** be taken from your bedroom – these must remain on the accommodation site and should not be used at sports venues.
- If visitors are staying up to 8 nights, their bed linen will be changed once during their stay.

- If visitors are staying over 10 nights, their bed linen will be changed twice during their stay.

Laundry

[Circuit Laundry](#) facilities can be found within the Chamberlain Tower block or at the Mason Launderette and Social Space. You will require your room card to access the facility.

- Your self-service cashless launderette is open 24 hours a day.
- Using the machines is easy with the new Circuit Laundry mobile app, available from the App Store or Google Play ('Circuit Laundry Plus').
- You can top up your account with Paypal or a credit or debit card in seconds. Just download the app and set up your account with your email and a password.
- When you're ready to use the laundry, make sure you've already set up your Circuit account on the app as above.
- Check you have good Wi-Fi or 3G/4G signal and have your Bluetooth turned on. Scan the QR code on your chosen machine or select the corresponding name (i.e W18). Select your chosen wash programme.
- You can use both washer and dryer options and the app will update you when your washing is ready!
- It is roughly £3.10 for a wash and £2 for a dry.

All delegations accommodated in Elgar Court and Shackleton will be expected use the facilities in Chamberlain Tower and Mason. You will be required to provide your own detergent and fabric softener as these will not be provided, so please be prepared.

Dining in the Games Village

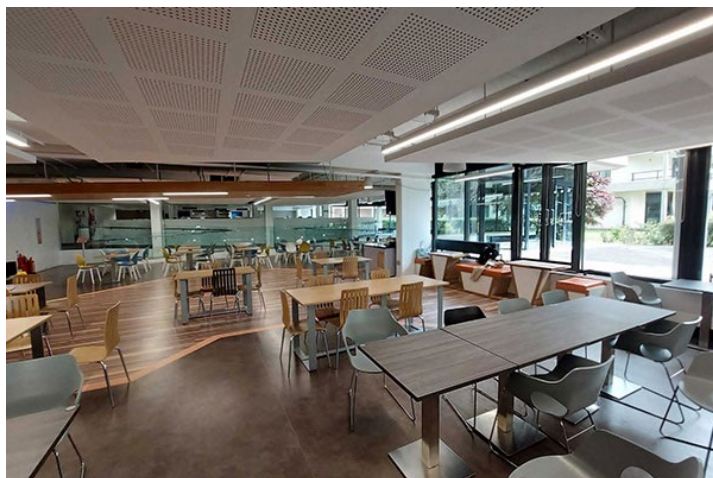
All meals will be served in the Vale Infusion restaurant on the ground floor of Shackleton, and from street food vendors based outside the Duck and Scholar and courtyard.

- Breakfast service: 06:00 – 10:00.
Hot and Continental option. Vendor, grab and go option.
- Lunch Service: 11:00 – 16:00.
Buffet option. Vendors available at busier services times.
- Dinner Service: 5pm – 10pm.
Buffet option and Vendor option.

All food and drink service as part of the agreed provision will be self-service.

There will be water refill stations at all venues, please ensure to bring your own water bottle.

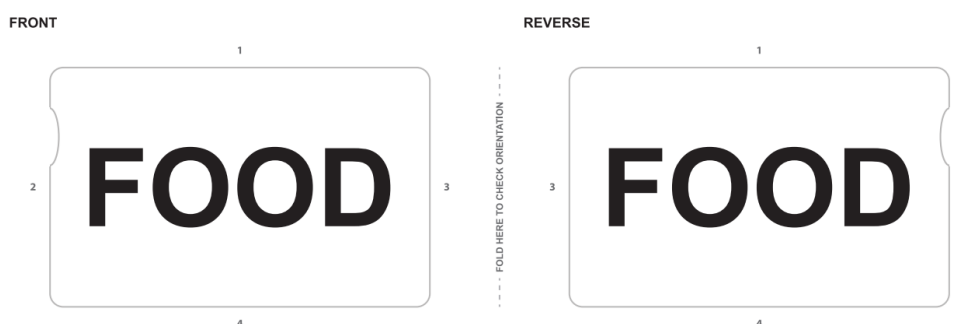
Menus will change daily and are available here: [Athlete Menus - University of Birmingham](#)



Catering - How it works

Each mealtime, you will be required to show your accreditation to receive a food token which you can exchange for a meal.

- You will only receive one token per athlete per meal (breakfast, lunch, dinner).
- Staff will be located near each of the catering spaces to hand out tokens and direct you to the Infusion canteen or food truck of your choice.
- Menu QR codes can be found on stickers at the corner of each table inside the restaurant to help you decide what to eat!



There are additional outlets within the Vale Village which are not included in your pre-paid package but where you can pick up additional snacks and drinks.

- Cost Cutter (Supermarket): Open 8am - 9pm.
- Shackleton Lounge (Pizza and Snacks): Open 8am – 7.30pm.
- Duck and Scholar (Pub) – Open 5pm – 10pm for alcoholic and soft drink purchases.
- *Please note that some of these outlets will be card only (no cash purchases).*

Allergens and Special Dietary Requests

Although we have excellent food hygiene standards and keep food containing allergens away from non-allergenic foods, our kitchens are not a completely allergen-free environment. If you have any allergy or dietary requirements, please ask a member of the Food Fellows catering team. All Food Fellows staff will be wearing a black Food Fellows t-shirt and dark green apron.

Campus Catering Outlets

There are additional catering outlets on campus which are not included in your pre-paid package but where you can pick up additional snacks and drinks. Opening times can be found here: [FAQs - University of Birmingham](#)

Wi-Fi

Free Wi-Fi is available via the ASK4 network.

1. Connect to the ASK4 Wireless Wi-Fi network
2. Go to signup.ask4.com
3. Follow the process to sign up

Venues on campus will use the UoB Guest Wifi.

Security (Locking Doors)

- To unlock bedroom doors, hold the end of your card flat against the reader.
- After the green flash, turn the cylinder two times away from the door frame enter. If the lock flashes red, please wait a few seconds and try again, then, please return to reception or call them on 0121 414 2838 for further assistance.
- To lock the bedroom door, hold the end of your card flat against the reader.
- After the green flash, turn the cylinder two times towards the door frame. If the lock flashes red, please return to reception or call them on 0121 414 2838
- Please note: the bedroom doors do not lock automatically behind you – please ensure you lock your bedroom door when you leave the flat. Front door access is taken by holding you card against the lock, once the light flashes green entry can be taken. The flat front door does secure automatically behind you so please ensure you have your keycard with you at all times when you leave your flat.

Important Contacts –

Chamberlain Reception (24/7) -	01214142838
Vale Reception (Shackleton, 24/7) -	01214158520
UoB Security – non emergency	0121 414 3000
UoB Security – Emergency	0121 414 4444

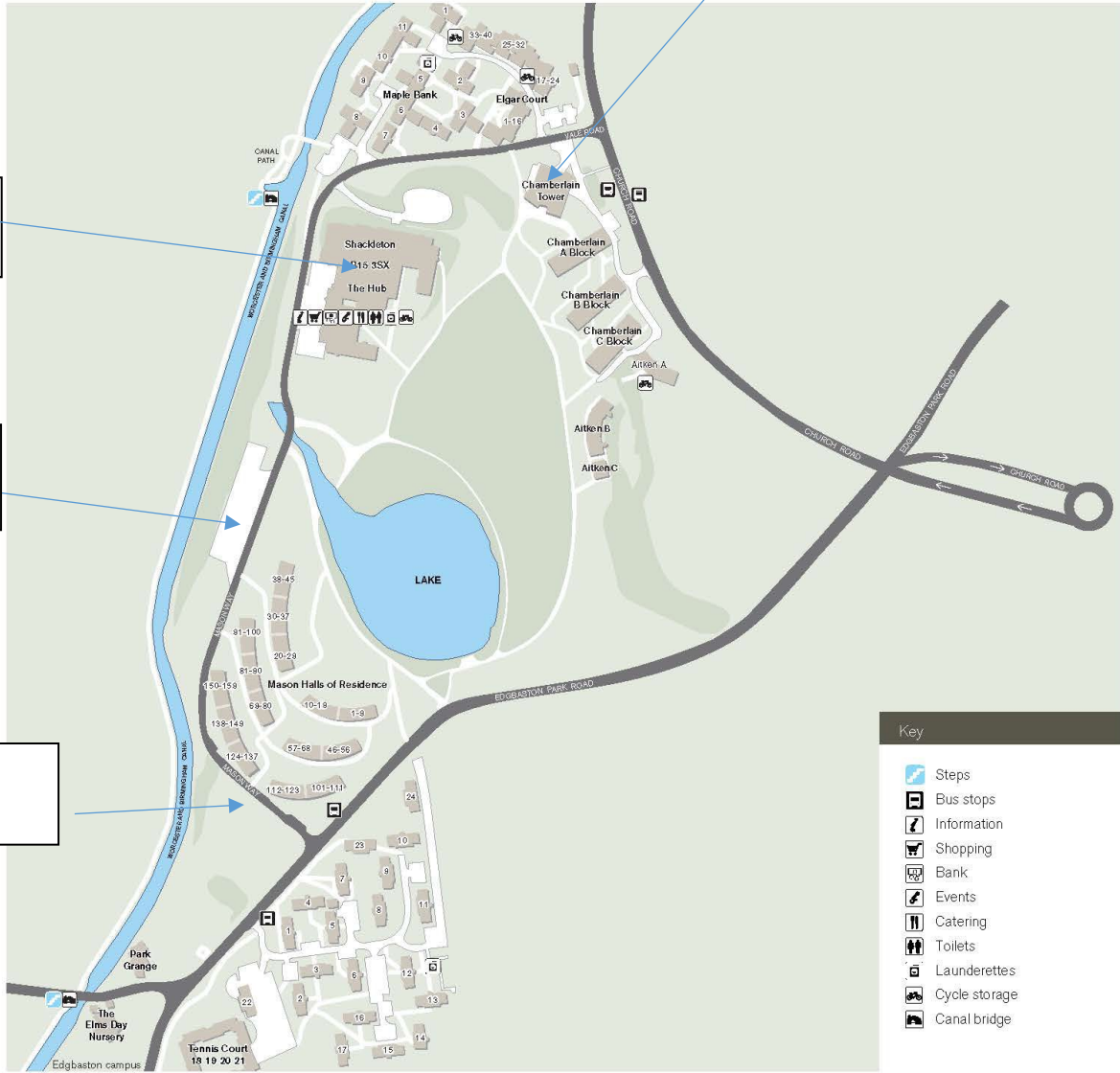
The Vale Map

Chamberlain Tower – Games Services
Medical, Laundry

Food Hall (Infusion)

Transport Hub

Mason Laundry

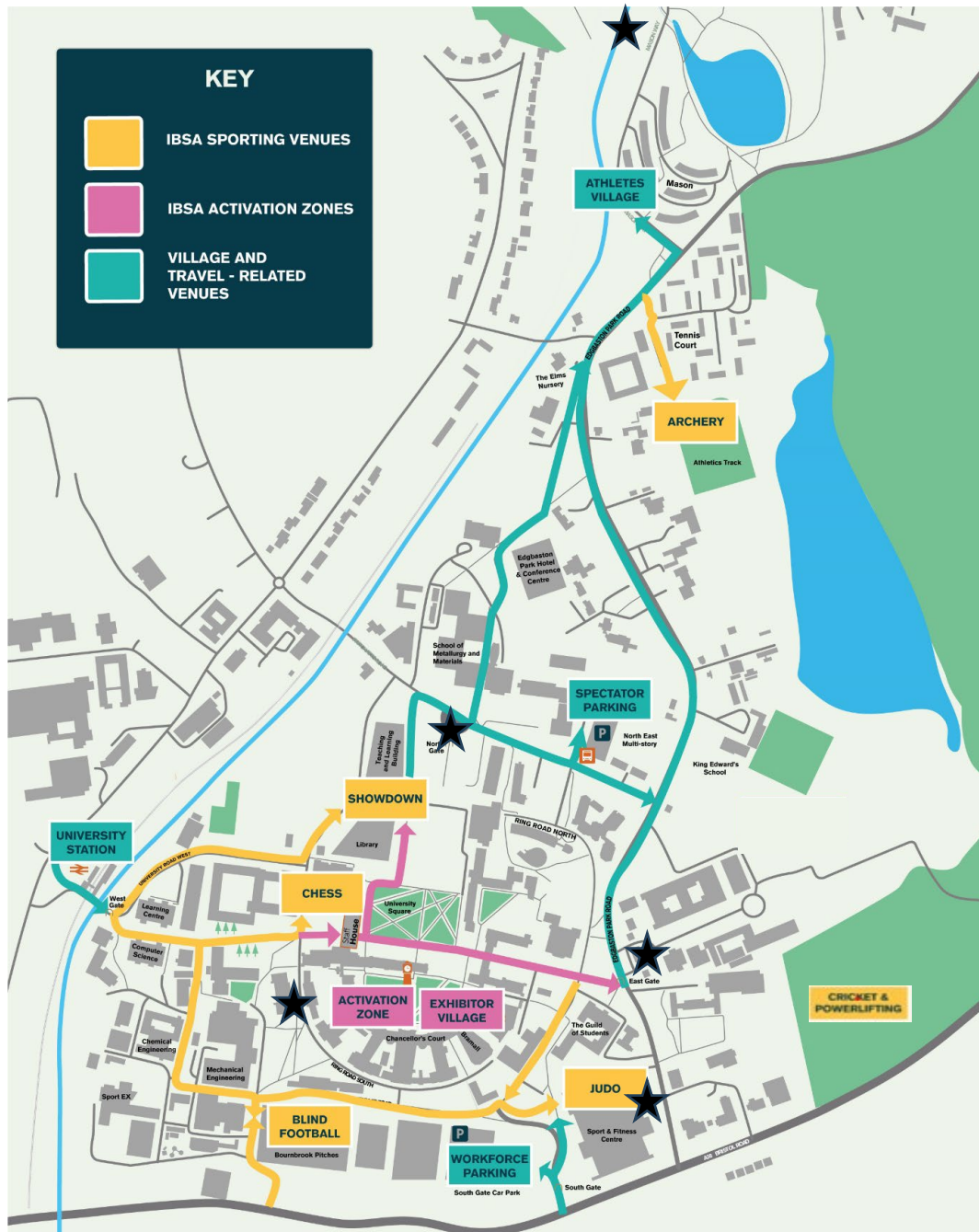


Edgbaston Campus and The Vale maps can be downloaded from <https://www.birmingham.ac.uk/contact/directions/index.aspx>

IBSA UoB VENUES

Designated Walking Routes and IBSA Campus Map

★ TRANSPORT BUS STOPS



You can find more information on the University's dedicated IBSA World Games page on the following link:

[IBSA World Games 2023 - University of Birmingham](#)

UoB Cultural Assets / Things to do

Barber Institute of Fine Arts: [The Barber Institute of Fine Arts - The Barber Institute of Fine Arts](#)

Hailed as a 'mini National Gallery for the Midlands', this Grade-1 listed museum, containing its globally important art collection, is right here on campus. Between competitions, enjoy spectacular masterpieces by the likes of Botticelli, Turner, Rossetti, Monet and Renoir. Free entry.

- Free entry. 10% off at the gift shop for accredited individuals.

Lapworth Museum: [The Lapworth Museum of Geology - University of Birmingham](#)

Meet "Roary" the allosaurus, discover ichthyosaur fossils and Dudley Bugs and find out everything you ever wanted to know about volcanoes, earthquakes and life on earth over the past 3.5 billion years. Free entry.

Winterbourne House and Garden: [The University of Birmingham - Winterbourne House and Garden](#)

- Half price entry with IBSA accreditation

Sculpture Trail & History through Objects:

www.birmingham.ac.uk/publicsculpturetrail

The Exchange: [The Exchange - Events. Exhibition. Cafe. - University of Birmingham](#)

Edgbaston Park Hotel: [Edgbaston Park Hotel & Conference Centre](#)

10% off meals in the 1900 Restaurant & Bar. Please book in advance.

Medical Information

Injuries And Medical Problems During Sporting Events

At every event there will be either a paramedic or a first aider who will deal with any injuries. Should any individuals require transfer to hospital, this will be arranged by the medical team as appropriate. An on-call doctor will be available for advice.

Local hospital: Queen Elizabeth Hospital Birmingham, Mindelsohn Way, Birmingham, B15 2WB.

Medical Appointments

Non-urgent medical issues will be reviewed by a doctor who will be based in Games Services at Chamberlain Building, University of Birmingham. An appointment can be booked by contacting a member of games services. Appointments will be available both morning and evenings on event days. Any individual with an accreditation will be eligible for an appointment with the doctor. All other personnel will be directed to local NHS services.

Date	GP Clinic	Physiotherapy & Sports Therapy
Sun 13 th Aug	08:00 – 10:00 & 17:00 – 19:00	
Mon 14 th Aug	08:00 – 10:00 & 17:00 – 19:00	
Tue 15 th Aug	08:00 – 10:00 & 17:00 – 19:00	
Wed 16 th Aug	08:00 – 10:00 & 17:00 – 19:00	
Thurs 17 th Aug	08:00 – 10:00 & 17:00 – 19:00	
Fri 18 th Aug	08:00 – 10:00 & 14:00 – 16:00	08:00 – 12:00 & 16:30 – 20:30
Sat 19 th Aug	08:00 – 10:00 & 16:00 – 19:00	08:00 – 12:00 & 16:30 – 20:30
Sun 20 th Aug	08:00 – 10:00 & 16:00 – 19:00	08:00 – 12:00 & 16:30 – 20:30
Mon 21 st Aug	08:00 – 10:00 & 16:00 – 19:00	08:00 – 12:00 & 16:30 – 20:30
Tue 22 nd Aug	08:00 – 10:00 & 16:00 – 19:00	08:00 – 12:00 & 16:30 – 20:30
Wed 23 rd Aug	08:00 – 10:00 & 16:00 – 19:00	08:00 – 12:00 & 16:30 – 20:30
Thurs 24 th Aug	08:00 – 10:00 & 16:00 – 19:00	08:00 – 12:00 & 16:30 – 20:30
Fri 25 th Aug	08:00 – 10:00 & 16:00 – 19:00	08:00 – 12:00 & 16:30 – 20:30
Sat 26 th Aug	08:00 – 10:00 & 17:00 – 19:00	08:00 – 12:00 & 16:30 – 20:30
Sun 27 th Aug	08:00 – 10:00 & 14:00 – 16:00	

Therapy Appointments

All musculoskeletal problems will be assessed by our physiotherapy team, who will also be based in Chamberlain building. Appointments will be available both morning and evenings on event days starting from Friday 18th August – Saturday 26th August. Transport will be arranged to the Chamberlain building should this be required. These will be booked at Games Services.

Urgent Medical Issues

For any urgent issues an on-call doctor can be contacted via Games Services or the accommodation reception team at Chamberlain for any issues out of hours. For all routine issues, appointments can be booked using the booking system above.

Medications

All individuals are asked to bring any regular prescription medications and basic pain relief that they would routinely require throughout the event. We would ask that you bring additional medication to cover you should you need to self-isolate or are unable to travel back home. Please also bring a copy of your prescriptions. Where possible, we will try to prescribe any additional medication from a local pharmacy, however, the athlete/delegate will have to pay the prescription costs.

Covid

The event will be governed as per the current UK national government guidance at the time of the event. There are no current plans to perform COVID testing throughout the event.

Insurance

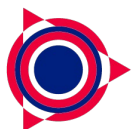
All individuals are responsible for ensuring they have adequate medical insurance to cover them for the duration of the time they are in the United Kingdom.

Vaccination

Please ensure you are up to date with all your vaccinations, and you bring a copy of your vaccination history to the event with you.

End Of The Event

Medical support will cease at 20:00 on Sunday 27th August. Any individual requiring ongoing medical support will be re-directed to NHS services.



Sports and Venues

Sports

The 2023 IBSA World Games will host 11 sports which will each take place across a number of high-class facilities.

Sport	Location
Archery	University of Birmingham – Athletics Track
Chess	University of Birmingham - Staff House, Café Aroma
Cricket	King Edward School/Tally Ho / Edgbaston Stadium
Men’s Blind Football Women’s Blind Football	University of Birmingham – Bournbrook Pitches
Partially Sighted Football	University of Wolverhampton - Walsall Campus
Goalball	Coventry Building Society Arena
Judo	University of Birmingham Sport & Fitness
Powerlifting	King Edward School, Andrew Brode Sport Centre
Showdown	University of Birmingham – Teaching & Learning Building
Ten Pin Bowling	Hollywood Bowl, Broadway Plaza
Tennis	Billesley Tennis Centre



Key Sport Information

Please find below specific requirements and information for each sport.

Sport	Key Information
Archery	There will be a storage facility onsite to store equipment.
Chess	IBSA World Games organisers request that all competitors provide their own boards and audio clocks. Few spares will be available.
Football	Athletes are required to provide their own eyeshades.
Goalball	Flooring for the Goalball competition will be a Taraflex overlay. Athletes are required to provide their own eye shades.
Showdown	Athletes are required to provide their own eyeshades, bat and mitt.
Ten Pin Bowling	Athletes must keep balls in their possession overnight in the Games Village. They will not be stored at the competition venue.



Venue Guide

There will be water refill stations at all venues, please ensure to bring your own water bottle.

University of Birmingham – Athletics Track

Sport: Archery

The international-standard athletics track at University of Birmingham will stage the archery competition. Fully floodlit with 8 lanes and a full range of throws and jumps areas, every eye will be drawn to the green centre of the track where the targets will be placed. The track is in walking distance from the Vale, close to Peter Scott House and across the road from Edgbaston Park Hotel.



University of Birmingham – Staff House, Café Aroma

Sport: Chess

Café Aroma is a large, airy first floor space in Staff House, at the heart of campus. Overlooking University Square, it's close to the food court and Costa Coffee. It's accessible by lift or via the sweeping staircase from the Bratby Bar.



University of Birmingham - Bournbrook Pitches

Sports: Men's & Women's Blind Football

The redeveloped 3G artificial football pitch is FA certified and has seen a variety of national and international sports events. Located next to the Bournbrook Pavilion, with its accessible changing facilities, Bournbrook is overseen by the iconic Old Joe, the world's largest freestanding clock tower, from the centre of campus.



University of Birmingham Sport & Fitness

Sport: Judo

The indoor hall consists of three courts with wood, semi-sprung floors, and bleacher seating for over 750 spectators. The hall has been host to numerous national and international sporting events, from Trampolining championships to England Netball team training, and most recently hosting the Squash competition for the Birmingham 2022 Commonwealth Games.



King Edward's School

Sports: Cricket, Powerlifting

King Edward's School is a beautiful facility situated on a 50-acre site next to the University of Birmingham. There are extensive sport facilities available at the school, including the 1st XI Cricket Pitch and the Andrew Brode Sports Centre, in which Powerlifting will take place.



Coventry Building Society Arena

Sport: Goalball

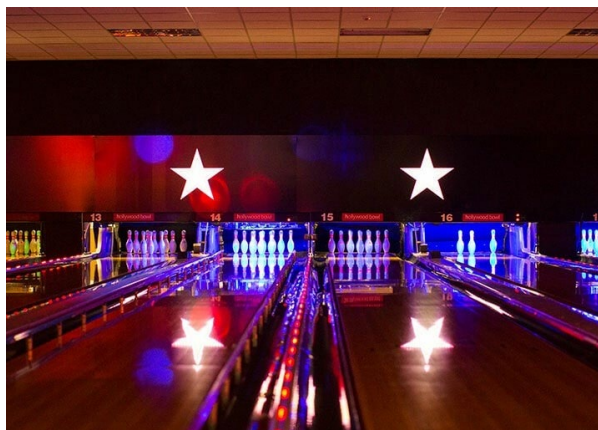
This multipurpose arena will play home to the Goalball tournament at the IBSA World Games.



Hollywood Bowl – Broadway Plaza

Sport: Ten Pin Bowling

This facility boasts 20 bowling lanes and is sure to set the scene for an eventful four days of tough competition. The site also contains an American themed diner, a relaxing bar, and an amusement area.



Billesley Tennis Centre

Sport: Tennis

Billesley Tennis Centre will play host to the four-day tennis competition, utilising the venue space of six indoor courts. The air-conditioned facility will act as the perfect venue for a heated competition.



University of Wolverhampton - Walsall Sports Centre

Sport: Partially Sighted Football

The Walsall campus at the University of Wolverhampton boasts top-of-the-range sports facilities and will accommodate Partially Sighted Football at the Games.



Tally Ho Sport: Cricket

As well as being a conference and banqueting center, Tally Ho is a venue which can host multiple sports events. This includes three football pitches, a cricket pitch, rounders square, three tennis courts and a level and crown green for bowls.



University of Birmingham - Teaching & Learning Building

Sport: Showdown

The Teaching and Learning Building opened in 2019 and is in the heart of campus. A hub for education, the facility provides state-of-the-art teaching and social study space to support the modern learning experience at Birmingham. Adjacent to the new library, the building is IT and audio-visual rich, with excellent access for students with a diverse range of needs and preferences.





Ceremonies and Celebrations

Opening Ceremony

The Opening Ceremony is set to take place at the Symphony Hall, located in Birmingham's Centenary Square, on Friday 18 August. The Symphony Hall hosts many classical concerts including performances by blind and visually impaired musicians. The venue, opened by Queen Elizabeth II in 1991, will be the



perfect setting for a spectacular launch of the Games. The official ceremony will last circa one hour, including musical performances by blind and partially sighted performers. Teams will be transferred by coach to and from the Opening Ceremony (20-minute journey time from the Games Village).

Closing Celebration

The Closing Celebration of the IBSA World Games will take place at the University of Birmingham on the evening of Sunday 27 August 2023. The Celebration will be a mix of formal and informal elements. Athletes will be able to mix and have fun and there's no need to travel!





Essential Information

Visas

It is the responsibility of the visiting nation to obtain any necessary visas to enter the country.

If you require a visa please ensure you have this before travelling to the UK.

The links below help attendees to check if they need a visa to travel to the UK, with a helpful step by step procedure. The standard visit visa rules will allow visitors to participate in sports events. The Home Office page explains what a visitor can and cannot do.

<https://www.gov.uk/apply-standard-visitor-visa>

<https://www.gov.uk/standard-visitor-visa>

Accreditation

All athletes and staff will be provided with official accreditation for the event, which must be carried at all times and presented at meals and when accessing Games Transport or Medical Services.

Insurance

All participating nations must arrange medical and accident insurance for the entire length of their stay. The insurance should cover all competitors and staff.

Doping control

Please be advised that this event is subject to anti-doping testing in accordance with the policies and procedures of IBSA and the World Anti-Doping Agency (WADA) regulations.



Communications

Registration Enquiries: ibsagames2023@mls.gb.co

Website: www.ibsagames2023.co.uk

Instagram, Twitter, Facebook: [@ibsagames2023](https://www.instagram.com/ibsagames2023)



Merchandise

Official IBSA Games Merchandise is available at the following dates and times.

Games Village – Shackleton Reception

Mon 21 – Fri 25 Aug 09:00 – 17:00

Mon 21 Aug Goalball 10:00 – 16:00

Tue 22 Aug Blind Football 10:00 – 16:00

Wed 23 Aug Activation Zone 10:00 – 16:00

Thurs 24 Aug Judo 10:00 – 16:00

Fri 25 Aug Blind Football 10:00 – 16:00



Water Access

Drinking water will be available at all venues. All athletes, team staff, officials and classifiers should bring their own refillable water bottle with them to the Games.